

36" x 36" Low Standard Threshold

Neo Angle

OD: 36" x 36" (914 mm x 914 mm)
 Threshold Hight: 2 1/2" (64 mm)
 Rough Opening: 36 1/4" x 36 1/4" (921 mm x 921 mm)
 Shower Pan Weight: 60 lbs. (27 kg.)

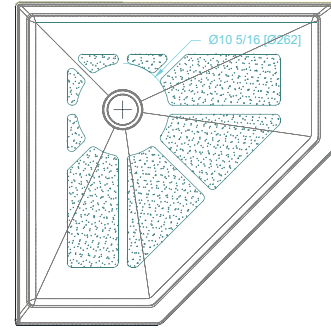
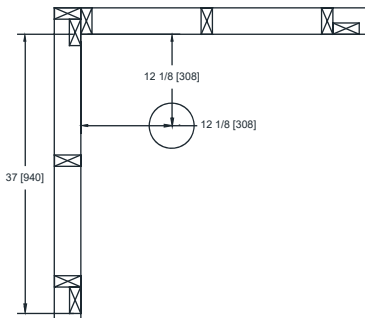
The Gemstone N3636LST 2 1/2" threshold allows for a low clearance threshold while allowing excellent drainage in a Neo Angle configuration. The option to add an optional factory applied patented membrane system to the shower pan is perfect for eliminating the risk of leakage at the most vulnerable point between the threshold of the shower pan and the flooring that adjoins, allowing the pan to be tied into a tile or flooring system. The texture meets and exceeds the F462 COF testing while being very easy to clean and the 1" water dams allow any wall system to be securely added. The grid system on the bottom of the pan has designed locations where elastomeric adhesion can be used to secure the pan to the substrate which is an advantage over other brands.

Gemstone shower pans carry a 10 year factory warranty when installed in accordance to the Gemstone installation instructions

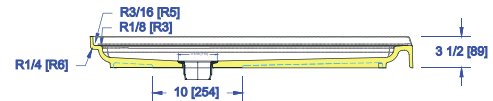
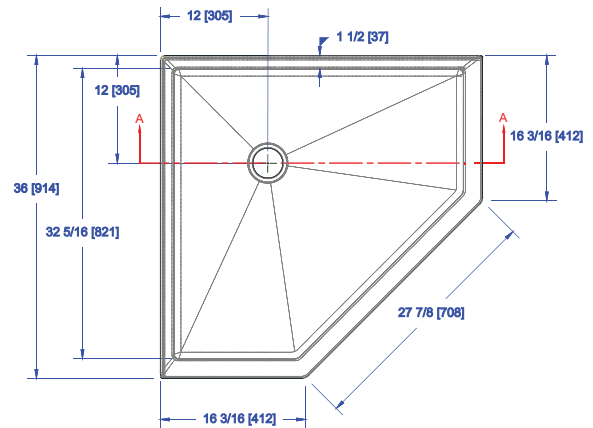
Drain Layout

Center of Drain is 12 1/8 (308 mm) from back wall by 32 1/8" (308mm) from left or right stud wall.
 A 6" core is recommended for drain clearance*

**Check all building and fire codes prior to installation*

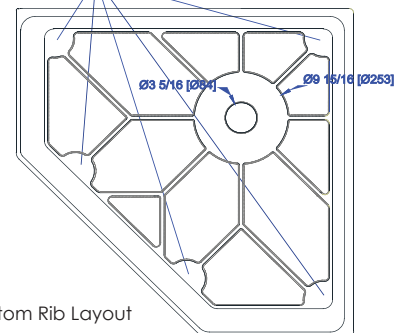


Texture Pattern



Section A-A

Adhesive Locators
 On Corners &
 Center Locations



Bottom Rib Layout



Certified by:
Home Innovation Lab
 (NAHB):ANSI Z124.2



Gemstone Shower Pans are
 proudly made in the USA