

## 1613-VSO Lavatory Bowl

(Integrated side overflow)

I.D.: 16 7/16" x 13 1/16" (418 mm x 331 mm)

Depth: 5 7/16"\* (137 mm)

\*Depth does not include counter top thickness



The Gemstone 1613-VSO has been designed with a side overflow for commercial applications where a little more clearance is needed for covering plumbing. This bowl can be used in all applications including residential, commercial, healthcare, hospitality, and more.

The 1613-VSO has a smooth integral (non-corrugated) overflow which minimizes trapped bacteria in the overflow tube itself. The design is sleek and efficient with unparalleled performance.

Gemstone Sinks are compatible and warranted when used with all major solid surface sheet brands (acrylic and polyester) with the same sheet warranties.



Gemstone supports conservation and green building practices. Gemstone Packages all products in 100% recyclable packaging using boxes made primarily of recycled paper.



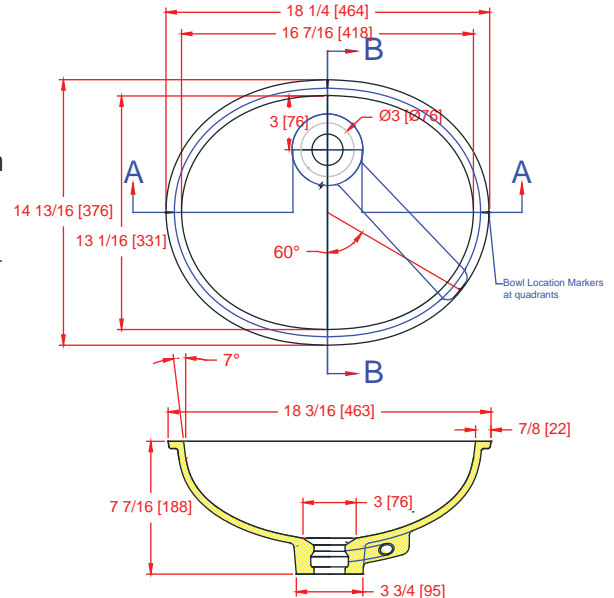
Gemstone sinks are proudly made in the USA and certified by:

**Home Innovation Lab** (NAHB) : HUD UM Bulletin No. 73a & (B45.5/IAPMO Z124 Z124.6)

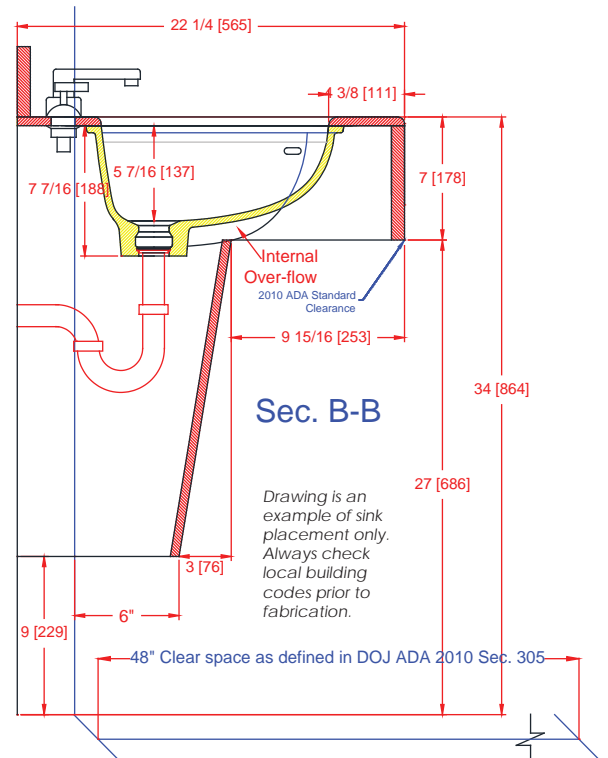
**UL** in the US and Canada: HUD UM Bulletin No. 73a & (B45.5/IAPMO Z124 Z124.6)



For router bit recommendations visit:  
[www.Gemstoness.com/Tech](http://www.Gemstoness.com/Tech)



Section A-A



Sec. B-B

Drawing is an example of sink placement only. Always check local building codes prior to fabrication.