

1518-V-ADA Lavatory Bowl

(No overflow model)

I.D.: 18" x 15" (457 mm x 381 mm)

Depth: 5 1/4" * (133 mm)

*Depth does not include counter top thickness



The Gemstone 1518-V-ADA (No overflow) lavatory shape allows the vanity bowl to be placed as close to the front of the top as needed without compromising ADA conformance. This bowl is ideal for hospital and clinical applications where infection

control and design are priorities, as well as restaurants and other public spaces, while not sacrificing performance.

Gemstone Sinks are compatible and warranted when used with all major solid surface sheet brands (acrylic and polyester) with the same sheet warranties.



Gemstone supports conservation and green building practices. Gemstone Packages all products in 100% recyclable packaging using boxes made primarily of recycled paper.



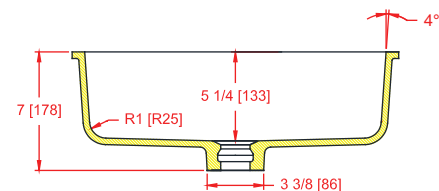
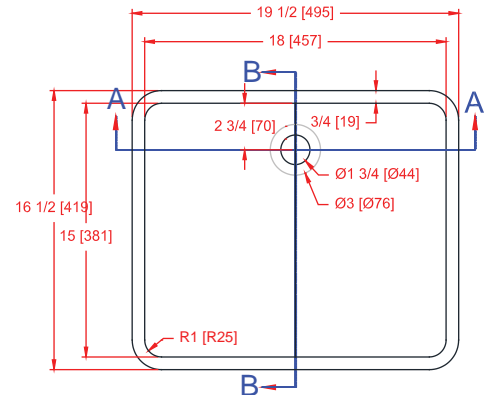
Gemstone sinks are proudly made in the USA and certified by:

Home Innovation Lab (NAHB) : HUD UM Bulletin No. 73a & (B45.5/IAPMO Z124 Z124.6)

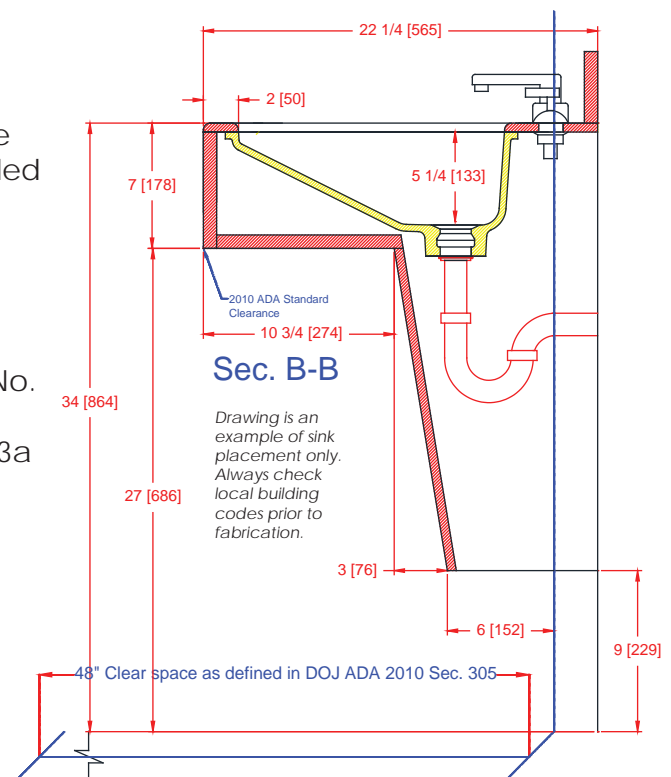
UL in the US and Canada: HUD UM Bulletin No. 73a & (B45.5/IAPMO Z124 Z124.6)



For router bit recommendations visit:
www.Gemstoness.com/Tech



Section A-A



Sec. B-B

Drawing is an example of sink placement only. Always check local building codes prior to fabrication.