

L1114-V Universal Lavatory Bowl

(No overflow model)

I.D.: 14" x 11" (356mm x 279mm)

Depth: 5" * (127 mm)

*Depth does not include counter top thickness



The Gemstone L1114-VO left curve lavatory is one of the newest additions to the Gemstone healthcare line up of sinks and vanities featuring an offset drain with no overflow for maximum infection control. The 1114-V is offered in both a left and right

hand version where a small wash basin is required for maximum space saving installations. This vanity is excellent for patient rooms, or other areas needing an efficient, space saving and contemporary looking sink. The 5" depth allows for easy ADA placement.

Gemstone Sinks are compatible and warranted when used with all major solid surface sheet brands (acrylic and polyester) with the same sheet warranties.



Gemstone supports conservation and green building practices. Gemstone Packages all products in 100% recyclable packaging using boxes made primarily of recycled paper.



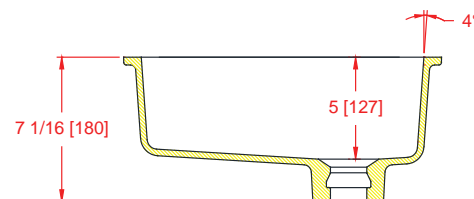
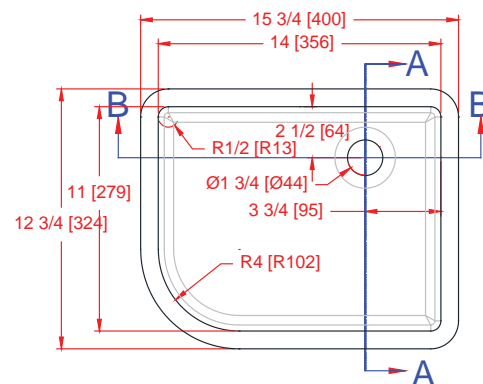
Gemstone sinks are proudly made in the USA and certified by:

Home Innovation Lab (NAHB) : HUD UM Bulletin No. 73a & (B45.5/IAPMO Z124 Z124.6)

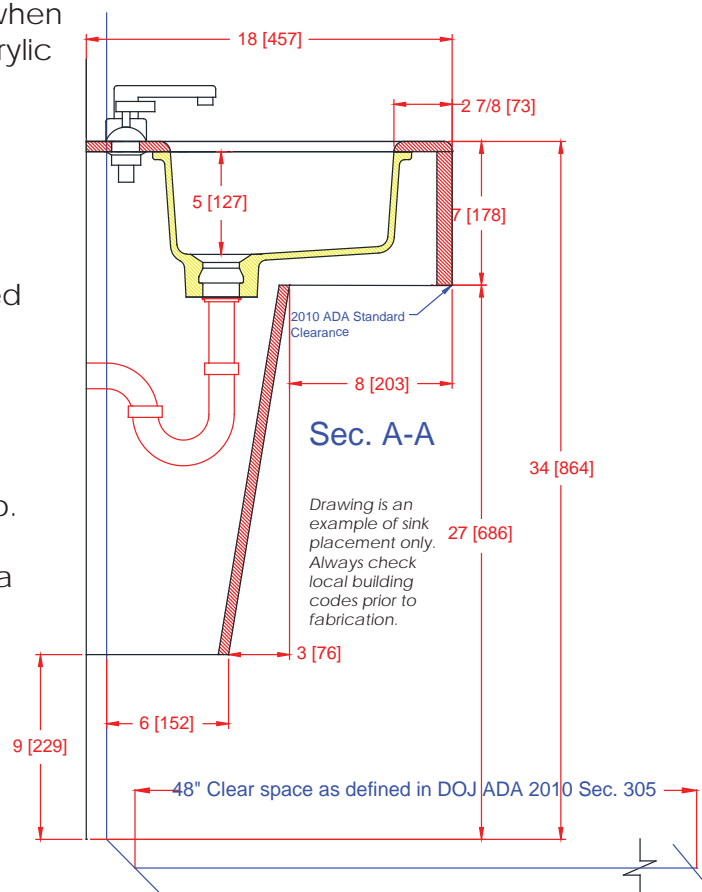
UL in the US and Canada: HUD UM Bulletin No. 73a & (B45.5/IAPMO Z124 Z124.6)



For router bit recommendations visit:
www.Gemstoness.com/Tech



Section B-B



Sec. A-A

Drawing is an example of sink placement only. Always check local building codes prior to fabrication.