

## 1514-VR Vanity Sink

(No Overflow Model)

I.D.: 15 1/4" x 13 7/8" (387 mm x 352 mm)

Depth: 5 1/4"\* (133 mm)

\*Depth does not include counter top thickness



The Gemstone 1514-VR with side overflow ADA lavatory shape allows the vanity bowl to be placed as close to the front of the top as needed without compromising ADA conformance. The offset drain prevents splash out when

using commercial drain grid strainers. This bowl is ideal for hospital and clinical applications where Infection control and design are priorities, as well as, restaurants and other public spaces, while not sacrificing performance. This bowl has a side overflow. The is also offered with an overflow option.

Gemstone Sinks are compatible and warranted when used with all major solid surface sheet brands (acrylic and polyester) with the same sheet warranties.



Gemstone supports conservation and green building practices. Gemstone Packages all products in 100% recyclable packaging using boxes made primarily of recycled paper.



Gemstone sinks are proudly made in the USA and certified by:

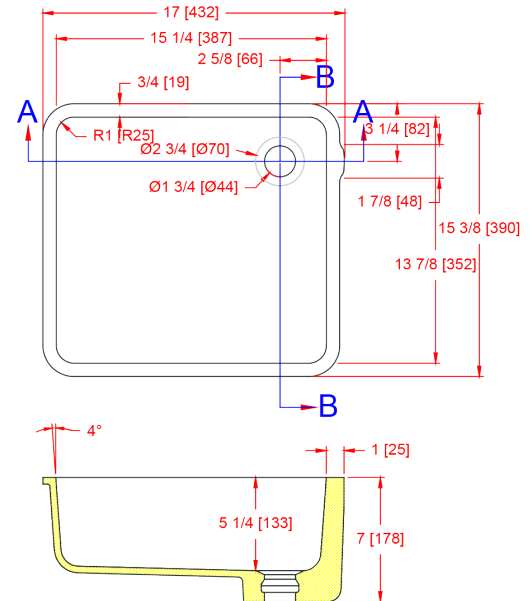
**Home Innovation Lab** (NAHB): HUD UM Bulletin No. 73a & (B45.5/IAPMO Z124 Z124.6)

**UL** in the US and Canada: HUD UM Bulletin No. 73a & (B45.5/IAPMO Z124 Z124.6)

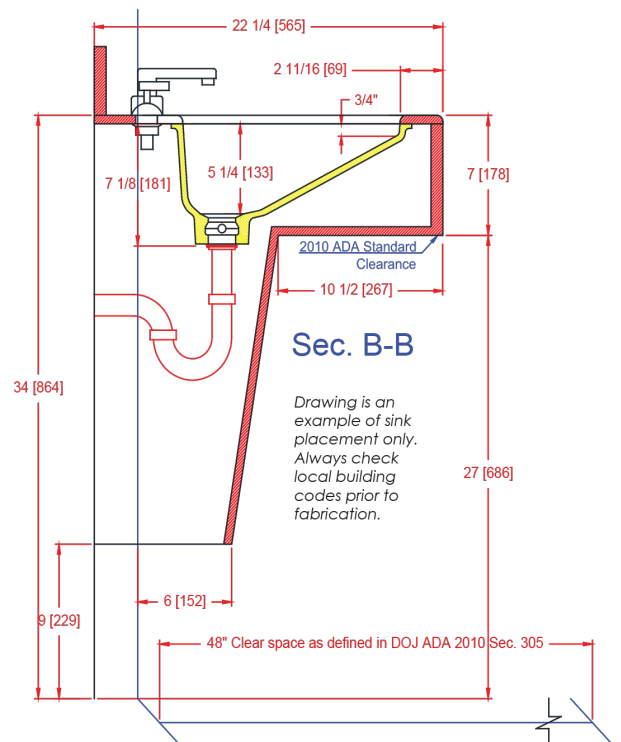


For router bit recommendations visit:

[www.Gemstoness.com/Tech](http://www.Gemstoness.com/Tech)



Section A-A



Sec. B-B

Drawing is an example of sink placement only. Always check local building codes prior to fabrication.