

1524-ES Single Bowl Sink

I.D.: 23 5/8" x 14 3/4" (600 mm x 375 mm)
Depth: 7 7/8" * (200 mm)
*Depth does not include counter top thickness



The Gemstone 1524-ES is one of Gemstone's newest sink lines, the ES series. The ES series line of sinks have tighter radii providing the sinks with a more up-to-date, sleeker look and unrivaled performance. The 1524-ES provides a large seamless

kitchen, utility, or laboratory sink which can be coupled with other ES sinks to create a multi-sink custom combination. This sink works well in laboratories and clinical applications as well as residential applications. Solid surface has excellent chemical resistant properties.

Gemstone Sinks are compatible and warranted when used with all major solid surface sheet brands with the same sheet warranties.

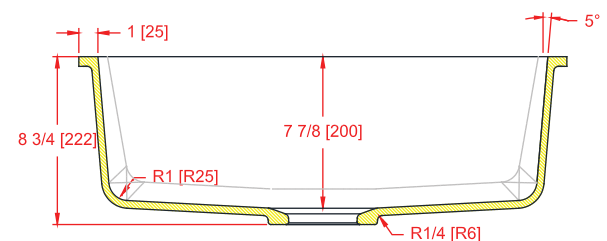
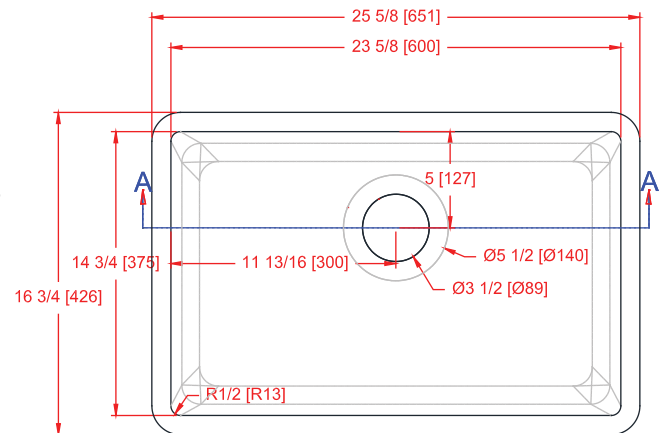
 Gemstone supports conservation and green building practices. Gemstone Packages all products in 100% recyclable packaging using boxes made primarily of recycled paper.



Gemstone sinks are proudly made in the USA and certified by:

Home Innovation Lab (NAHB) : HUD UM Bulletin No. 73a & (B45.5/IAPMO Z124 Z124.6)

UL in the US and Canada: HUD UM Bulletin No. 73a & (B45.5/IAPMO Z124 Z124.6)



Section A-A



For router bit recommendations visit:
www.Gemstoness.com/Tech